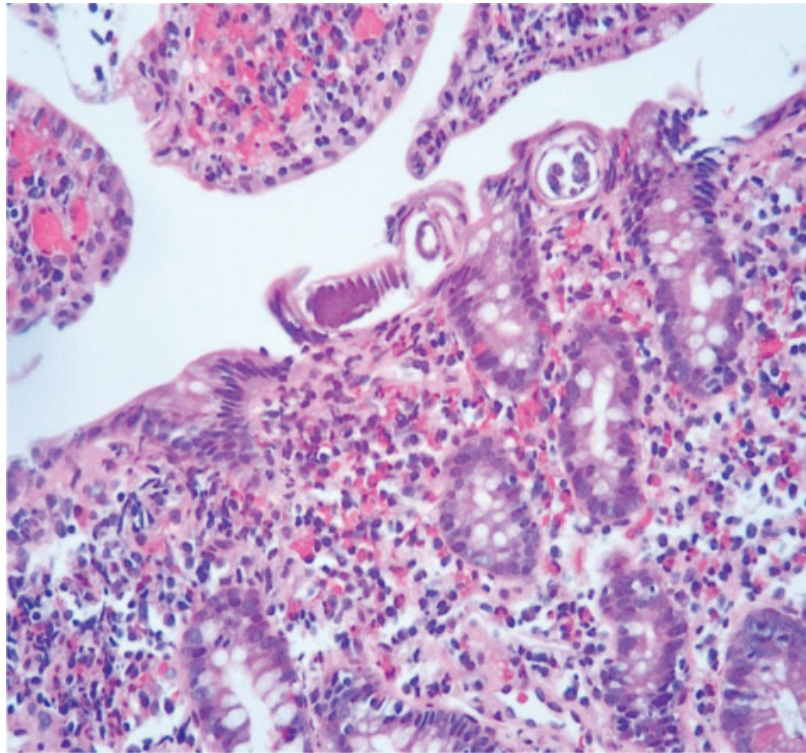


*Klaikaew N***Case 1**

A 42 years old female, HIV seropositive, presented with chronic watery diarrhea for 3 months with weight loss. The EGD was performed and duodenal biopsies were done. The pathology of duodenum was reported small bowel mucosa reveals long and slender parasite with stichosome embedded in crypts. Eosinophilic infiltration is prominent (Figure 1).



**Figure 1.**

**What is the most likely diagnosis?**

*(Answer see page 120)*

Klaikeaw N

## Case 2

A 46 years old male, HIV seropositive, presented with chronic watery diarrhea for 3 months with weight loss. The EGD was performed and duodenal biopsies were done. The pathology of duodenum was reported small bowel villi shows reactive change of epithelial lining cells with attached small round organisms at the luminal surface (Figure 2, 3).

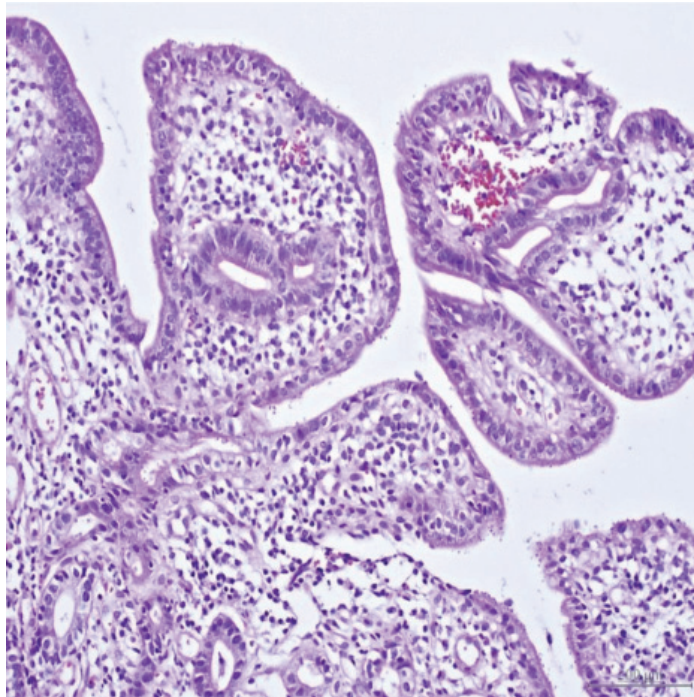


Figure 2.

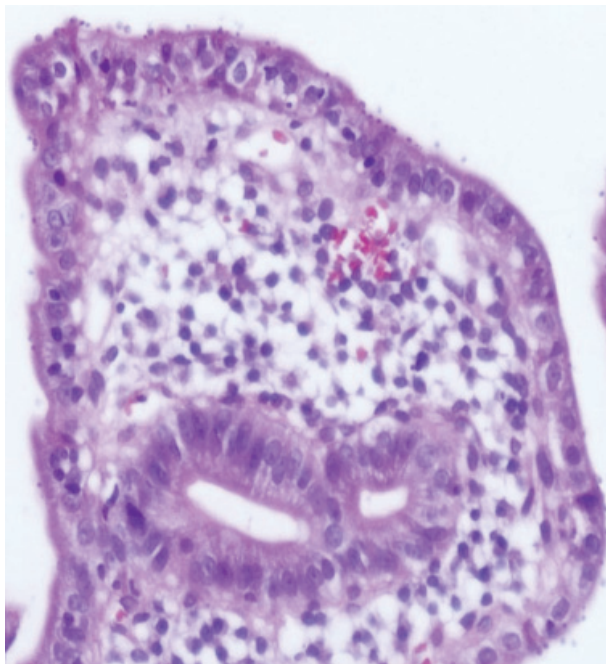


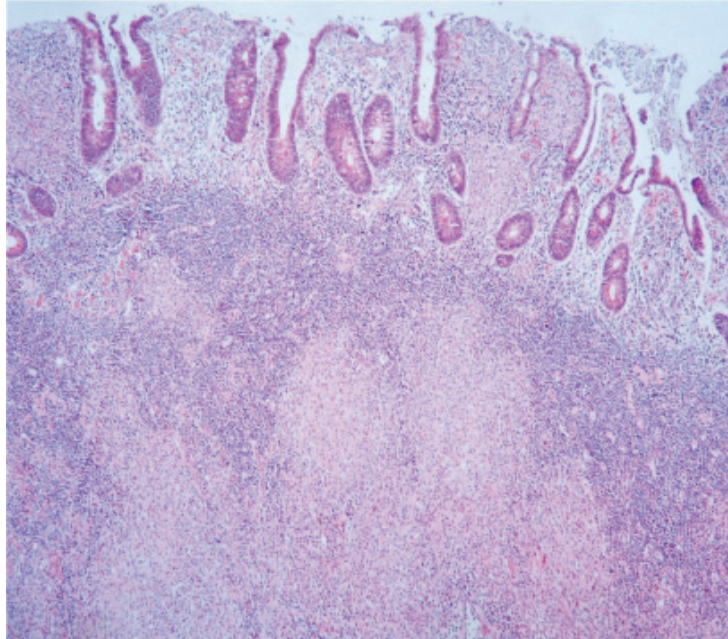
Figure 3.

**What is the most likely diagnosis ?**

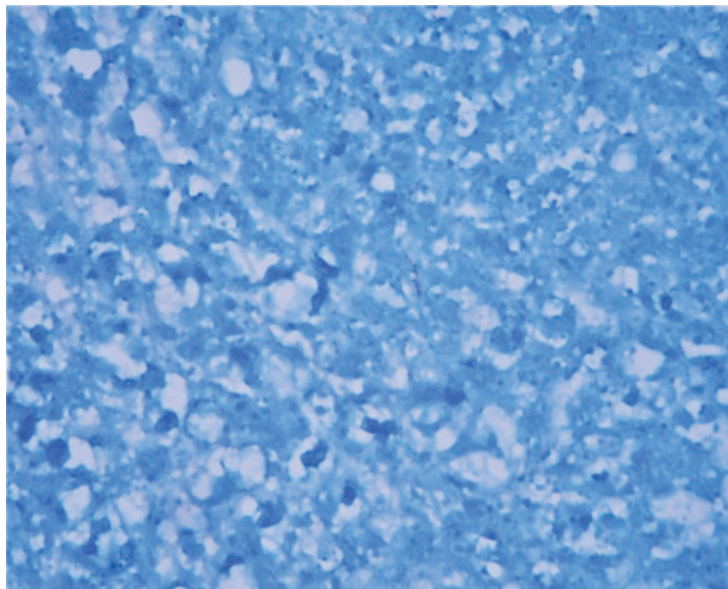
*(Answer see page 120)*

**Case 3**

A 48 years old male, HIV seropositive, presented with chronic mucus diarrhea for 3 months with weight loss. The colonoscopy was performed and colonic biopsies were done at the lesions. The pathology of colon was reported colonic wall with mucosal ulceration and diffuse granulomatous lesions with AFB positive (Figure 4, 5).



**Figure 4.**



**Figure 5.**

**What is the most likely diagnosis?**  
(Answer see page 120)

**Answer for patho corner**

- Case 1 = Capillariasis.
- Case 2 = Cryptosporidiosis.
- Case 3 = Colonic Tuberculosis.